



November 7, 2007

FOR IMMEDIATE RELEASE

Press contact: Brett Oberman at Keith Sherman & Associates, (212) 764-7900, brett@ksa-pr.com

**“A HIT! I LOVED IT!
A WONDERFUL CAST!
CATCH IT IF YOU CAN!”**

- Magee Hickey, "CBS2 News," WCBS-TV

**“THIS FRANKENSTEIN BRINGS
THE CLASSIC STORY
THRILLINGLY TO LIFE!”**

- The Associated Press

**“RIVETING!
TOTALLY EXCITING!
I HATED TO SEE IT END!”**

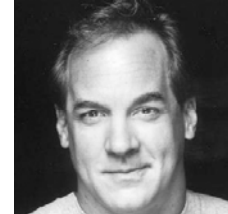
- Joe Franklin, Bloomberg Radio



HUNTER FOSTER



CHRISTIANE NOLL



STEVE BLANCHARD

IN THE NEW MUSICAL BASED ON MARY SHELLEY'S CLASSIC

FRANKENSTEIN

ALSO FEATURING JIM STANEK AND MANDY BRUNO

MUSIC BY MARK BARON BOOK & LYRICS BY JEFFREY JACKSON DIRECTED BY BILL FENNELLY

NOW PLAYING OFF-BROADWAY AT 37 ARTS

WWW.FRANKENSTEINTHEMUSICAL.COM

Frankenstein, the new musical adapted from Mary Shelley's novel, stars Tony Award nominee **Hunter Foster** (*Little Shop of Horrors, Urinetown, The Producers*) as Victor Frankenstein, **Christiane Noll** (*Witches of Eastwick, Jekyll & Hyde*) as Elizabeth and **Steve Blanchard** (*Beauty and the Beast, A Christmas Carol*) as The Creature. The company also features **Jim Stanek** (*Jacques Brel..., Lestat, I Love You You're Perfect...*) as Henry and **Mandy Bruno** (Broadway's *Les Miserables*, Daytime Emmy Award nominee for *Guiding Light*) as Justine. The ensemble includes **Becky Barta, Nick Cartell, Casey Erin Clark, Struan Erlenborn, Eric Michael Gillett, Leslie Henstock, Patrick Mellen** and **Aaron Serotsky**. **Frankenstein** plays at 37 Arts (450 West 37th Street).

Frankenstein is the story of the rebel scientist who challenges the laws of nature and morality when he breathes life into his inanimate creature. Faced with intolerance and adversity, the scientist's creation rebels against the world around him, ultimately destroying the very man who gave him life.

Presented by Gerald Goehring, Douglas C. Evans, Michael F. Mitri and David S. Stone in association with Barbara & Emery Olcott, **Frankenstein** features music by Mark Baron, book and lyrics by Jeffrey Jackson, original story adaptation by Gary P. Cohen and direction by Bill Fennelly. The scenic design is by Kevin Judge; costume design by Emily Pepper; lighting design by Thom Weaver; sound design by Dominic Sack and Carl Casella; and orchestrations by Richard DeRosa and Marc Baron.

Variety hails that **Frankenstein** is "a first-class production." WCBS-TV calls the show "thrilling" with "a wonderful cast," while the Associated Press says the cast is "universally talented. Hunter Foster is completely captivating. Christiane Noll is the perfect mix of strength and vulnerability with a rich and enveloping soprano. Steve Blanchard commands the stage." Gannett Newspapers writes "what is amazing about this show is how much fun it turns out to be," and describes the show as "an elegant production. A large musical in a contemporary Broadway style" with "a score which will put you in mind of *Les Miserables*."

Frankenstein plays at 37 Arts (450 West 37th Street) Monday, Wednesday, Thursday, Friday and Saturday at 8PM; Wednesday, Saturday and Sunday at 3PM. Tickets are \$41.25 - 69.25. \$20.00 student rush tickets are available at all performances 20 minutes prior to curtain with valid student ID. Tickets are now on sale through TicketMaster.com at 212-307-4100. Visit www.FrankensteinTheMusical.com.

PHOTO EDITORS: High-res (jpg, 300dpi) images of Frankenstein can be downloaded at <http://www.FrankensteinTheMusical.com/presskit>

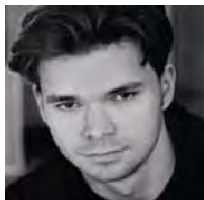
HUNTER FOSTER (*Victor Frankenstein*) originated the role of Bobby Strong in the Broadway and Off-Broadway companies of *Urinetown* (Outer Critic and Lucille Lortel Award Nominations). Broadway: *Grease* (Roger), *Footloose*, *Les Miserables* and Alan Menken's *King David*. Toured nationally as the Rum Tum Tugger in *Cats* and understudied and performed the role of Martin Guerre in the Cameron Makintosh production of *Martin Guerre*. He also appeared in the New York premiere of *Children of Eden* (Abel) by Stephen Schwartz at the Paper Mill Playhouse. He also appeared in the regional production of *Little Shop of Horrors* (Seymour) in the Summe of 2003. As a writer, he has penned books to the musicals *Summer of '42* (which premiered off-Broadway in the winter of 2002) and the upcoming *Bonnie and Clyde* and *Fearless*. He is a graduate of the University of Michigan's Musical Theatre Program (BFA 1992).

CHRISTIANE NOLL (*Elizabeth*) Broadway: *It Ain't Nothin But The Blues*, *Jekyll & Hyde* (Original Cast), *Grease*. First Nat'l: *Urinetown*, *Miss Saigon*, *City of Angels*. Pre-Broadway: *Mambo Kings*. Animated Feature: *The King & I* (Singing Anna). Other: *Witches of Eastwick* (Signature Theatre, VA.) *New Moon* (Encores!), *Mack & Mabel*, *Baker's Wife*, *Lizzie Borden* (Goodspeed Opera), *Call The Children Home* (Primary Stages), *Kept* (Theatreworks/Palo Alto - dir. Scott Swartz), *The Student Prince*, *Carousel* (Paper Mill Playhouse), *Lincoln Center "American Songbook Series" - Frank Loesser, Little By Little* (York Theatre Co.) Symphony Soloist with Marvin Hamlisch, Don Pippin and Peter Nero. Opera debut: Washington National Opera, opposite Placido Domingo. Recordings: *Christiane Noll - A Broadway Love Story, Live At The Westbank. The Gershwin Album*. www.christianenoll.com

STEVE BLANCHARD (*The Creature*) was last seen on Broadway as "the Beast" in *Beauty and the Beast* at the Lunt-Fontanne (Steve has the distinction of having played this role for more performances than any other actor on Broadway). Steve has also played the title role in Toronto and Gaston in the Broadway production. Steve originated the title role in the new Off-Broadway musical, *Johnny Guitar*, which played at the Century Center Theatre in the spring of 2004. He can be heard on the original cast recording of the production. Later that year, Steve starred as Doc Holliday in the original recording of the new musical, *Sundown*, based on the Legend of Doc Holliday. Other stage credits include *The Three Musketeers* on Broadway, *Hot Mikado* at the Ford's Theatre, Ken Hill's original *Phantom of the Opera*, *A Funny Thing Happened on the Way to the Forum* starring Mickey Rooney, the national tour of *Camelot* starring Robert Goulet and *A Christmas Carol* at Madison Square Garden. On television he has been seen in *Ed*, *Third Watch*, *Law and Order*, *Sunset Beat*, *Police Story*, *Another World*, *One Life to Live*, *Guiding Light*, and *Rapmaster Ronnie* for HBO.

JIM STANEK (*Henry*) made his Broadway debut opposite Kathleen Turner, when he understudied and went on for Jude Law in the play *Indiscretions*. He followed that by playing the role of Hero in the revival of *A Funny Thing Happened On The Way To The Forum*. Since then, he has appeared on Broadway in *The Rivals*, *Little Women*, and most recently as Louis in *Lestat*. Off-Broadway includes: originating roles in *Slut*, and *Captain's Courageous*; and roles in *Jacques Brel...*, and *I Love You, You're Perfect, Now Change*. Regionally, Jim starred as Paul in the Kennedy Center's Spring 2007 revival of *Carnival*. He's also had roles in *My Fair Lady* (McCarter), *Threepenny Opera* (Williamstown), *3hree Musketeers* (San Jose), and *Thoroughly Modern Millie* (La Jolla). Film credits include: *Bella*, *Borough of Kings*, and *Murder, He Squeaked*. TV: "Adversaries" (NBC pilot), and "Guiding Light." He can be heard on recordings of *...Forum*, and *3hree Musketeers* and is a graduate of Carnegie Mellon University.

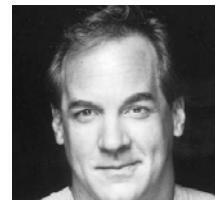
MANDY BRUNO (*Justine*) took over the role of Marina Cooper on "Guiding Light" on May 12, 2004. In 2006, Bruno received her first Daytime Emmy Award nomination for Outstanding Younger Actress in a Drama Series. Stage credits include Eponine in Broadway's *Les Miserables* and Belle in *Beauty and the Beast* at the Pittsburgh Civic Light Opera House, *The Man Who Would Be King*, starring opposite "Guiding Light" former star Paul Anthony Stewart, *Vanity Fair*, *Green Gables* and *Little Shop of Horrors*. Bruno appeared in several commercials for RCN and the Partnership for a Drug Free America. She is also the spokesperson and vocalist on recordings for spiritandsong.com records.



HUNTER FOSTER



CHRISTIANE NOLL



STEVE BLANCHARD

IN THE NEW MUSICAL BASED ON MARY SHELLY'S CLASSIC

FRANKENSTEIN

NOW PLAYING AT **37 ARTS**, 450 WEST 37TH STREET CALL **TICKETMASTER.COM**, (212)307-4100

WWW.FRANKENSTEINTHEMUSICAL.COM